

Seattle Kennel Club Agility Trial - Running Order Information

Friday, Saturday and Sunday, May 18-20, 2018

LOCATION FOR TRIAL - Argus Ranch Facility for Dogs
35612 212th Way SE, Auburn, WA 98092 www.argusranchonline.com

This trial will be held indoors at Argus Ranch.

Driving Directions

From North or South End

Take I-5, I-405, SR-167 to Highway 18 eastbound. Exit onto Auburn-Black Diamond Road eastbound. Turn RIGHT onto SE Green Valley Road (just past Neely Mansion). Follow for about 7.5 miles. Turn RIGHT onto 212th Way SE

Take First LEFT into Argus Ranch and follow drive straight ahead to Arena and signed parking.

From Hwy. 410 or WA 164 (Auburn-Enumclaw Hwy.)

Turn LEFT onto 244th Ave. SE (approximately one mile out of Buckley) Go STRAIGHT at Light on SE 436th Way/WA-164. Go STRAIGHT at Stop Sign SE 416th St. Go STRAIGHT at Stop Sign SE 400th St. Turn LEFT at Stop Sign onto SE 384th St. Turn RIGHT at Stop Sign 212th WAY SE. Turn RIGHT at ARGUS RANCH Sign (just before Bridge). Follow drive STRAIGHT ahead to Arena and signed parking.

From SR-169

Turn onto SE Green Valley Road (in front of the Boondocks Nursery). Go about four miles. Turn LEFT onto 212th Way SE. Go over the Cement Bridge. (Whitney Bridge) Take First LEFT into ARGUS RANCH and follow drive straight ahead to Arena and signed parking.

Agility Trial Information

- Judges:** Gillian Crawford & Zach Davis
- Start Times:** Friday 10:00 AM, Weekend 9:00 AM – Rings will run at the same time.
- Class Schedule:** See the charts below
- Walkthroughs:** There will be a single walkthrough for each class with Exc Std and Jww split by height. FAST will have a single walkthrough for all levels (Novice, Open, Exc/Mas)
- Veterinarian:** 24-Hour Veterinarian: Sumner Vet Hospital, 16024 60th St. E, Sumner, WA 98390 253-863-2258
Directions: From Argus Ranch – turn left onto 212th Way SE and drive about 2 miles to the top of the hill to the ‘T’. Take a left and immediate right to stay on 212th Way SE and continue south for 3.2 miles to WA-164th/SE 436th St. Turn left for 2.0 miles and turn right on 244th Ave SE. Drive for 2 more miles to WA-410 (Enumclaw Buckley Rd) and turn right. Drive for 10.8 miles to the 166th Ave Exit and turn right onto Sumner Tapps Hwy E. Drive north for .3 miles and take a left onto 60th St. E Drive for .4 miles and the hospital is on the left.
- Moveups:** The deadline for move-ups is Monday May 14th, at 6PM. Move-ups must be received in writing or email by that deadline. Day-to-day move-ups are being accepted for Saturday and Sunday.
- Workers:** We are using the white board for workers. Please help out where you can ☺.
- Setup:** Crating setup is available on Thursday night, but the rings are not available until Friday morning.
- RVs:** All RV camping must be arranged with Argus Ranch. Go to their website www.argusranch.com to make arrangements.

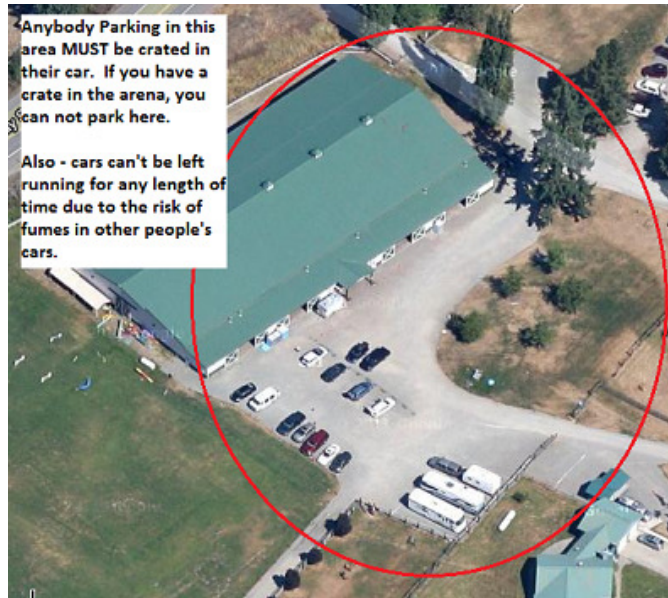
IMPORTANT NOTE ABOUT FAST!!!!

All levels of Fast will walk together and run together by jump height.

Crating / Parking Information

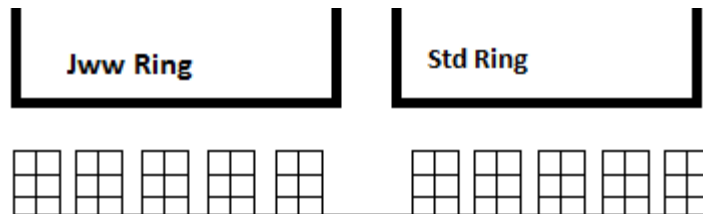
Car Parking:

If you are parking in the area indicated on this diagram – basically anywhere near the Arena, you may not also have a crate inside. This area is reserved for ONLY those people that want to crate out of their cars. Also make sure to not run your car's engine excessively as that puts exhaust fumes in the car next to yours and gasses out those dogs !!!



Crating Inside:

If you are crating in the arena, please use the following crating layout instead of just putting crates up against the walls. No expens. Here is a simple picture.



Crating in rows as shown. This lets us get more people into the area than if we just go up against the wall. Please put your chairs along the rings.

	Ring 1 – Zach Davis	Ring 2 – Gillian Crawford
<p>Friday 10:00 AM start <u>Small to Tall</u></p> <p>Times other than Fast & Premier Jww are rough approximates.</p> <p>Fast is a combined walkthrough for Excellent, Open, Novice. All levels will run together by jump height.</p>	<p>10:00 Prm Jww Walk Run</p> <p>Course Change</p> <p>11:00 Prm Std Walk Run</p> <p>Course Change</p> <p>11:55 Exc Std Walk 4-12 Run 4-12</p> <p>1:00 Walk 16-24 Run 16-24</p> <p>Course Change</p> <p>2:00 Open Std Walk Run</p> <p>Course Change</p> <p>2:45 Novice Std Walk Run</p> <p>3:00 Done</p>	<p>10:30 FAST Walk Run</p> <p>Course Change</p> <p>11:25 T2B Walk Run</p> <p>Course Change</p> <p>12:20 Nov Jww Walk Run</p> <p>Course Change</p> <p>1:00 Open Jww Walk Run</p> <p>Course Change</p> <p>1:45 Exc Jww Walk 4-12 Run 4-12</p> <p>2:30 Walk 16-24 Run 16-24</p> <p>3:00 Done</p>

	Ring 1 – Gillian Crawford	Ring 2 – Zach Davis
<p>Saturday 9:00 AM start</p> <p><u>Tall to Small</u> <u>(ish)</u></p> <p>Exc Std/Jww 24, 20 12 16, 8, 4</p> <p>Times other than Fast & Premier Jww are rough approximates.</p> <p>Fast is a combined walkthrough for Excellent, Open, Novice. All levels will run together by jump height.</p>	<p>9:00 Prm Jww Walk Run</p> <p>Course Change</p> <p>10:15 Prm Std Walk Run</p> <p>Course Change</p> <p>11:20 Exc Std Walk 24-20 Run 24-20</p> <p>12:30 Walk 12 Run 12</p> <p>1:00 Walk 16, 8, 4 Run 16, 8, 4</p> <p>Course Change</p> <p>2:30 Open Std Walk Run</p> <p>Course Change</p> <p>3:10 Novice Std Walk Run</p> <p>3:25 Done</p>	<p>9:30 Fast Walk Run</p> <p>Course Change</p> <p>10:45 T2B Walk Run</p> <p>Course Change</p> <p>11:45 Nov Jww Walk Run</p> <p>Course Change</p> <p>12:25 Open Jww Walk Run</p> <p>Course Change</p> <p>1:10 Exc Jww Walk 24-20 Run 24-20</p> <p>2:00 Walk 12 Run 12</p> <p>2:35 Walk 16, 8, 4 Run 16, 8, 4</p> <p>3:10 Done</p>

	Ring 1 – Zach Davis	Ring 2 – Gillian Crawford
<p>Sunday 9:00 AM start</p> <p><u>Small to Tall</u> <u>(ish)</u></p> <p>Exc Std/Jww 4, 8, 16 12 20, 24</p> <p>Times other than Fast & Premier Jww are rough approximates.</p> <p>Fast is a combined walkthrough for Excellent, Open, Novice. All levels will run together by jump height.</p>	<p>9:00 Prm Jww Walk Run</p> <p>Course Change</p> <p>10:15 Prm Std Walk Run</p> <p>Course Change</p> <p>11:20 Exc Std Walk 4, 8, 16 Run 4, 8, 16</p> <p>12:15 Walk 12 Run 12</p> <p>1:00 Walk 20, 24 Run 20, 24</p> <p>Course Change</p> <p>2:20 Open Std Walk Run</p> <p>Course Change</p> <p>3:10 Novice Std Walk Run</p> <p>3:25 Done</p>	<p>9:30 Fast Walk Run</p> <p>Course Change</p> <p>10:35 T2B Walk Run</p> <p>Course Change</p> <p>11:35 Nov Jww Walk Run</p> <p>Course Change</p> <p>12:15 Open Jww Walk Run</p> <p>Course Change</p> <p>1:00 Exc Jww Walk 4, 8, 16 Run 4, 8, 16</p> <p>1:45 Walk 12 Run 12</p> <p>2:20 Walk 20, 24 Run 20, 24</p> <p>3:00 Done</p>

Saturday – 397 runs

STD	NOV									Judge	Ring
Division	4	8	12	16	20	24	24C	14	18		
NOV A						1				Gillian Crawford	1
NOV B			1		2	1				Gillian Crawford	1
NOV P		2		1	1					Gillian Crawford	1
NOV		2	1	1	3	2				TOTAL RUNS	9
STD	OPN										
Division	4	8	12	16	20	24	24C	14	18	Judge	Ring
OPEN		1		1	2	2				Gillian Crawford	1
OPEN P				1	2					Gillian Crawford	1
OPN		1		2	4	2				TOTAL RUNS	9
STD	EXC										
Division	4	8	12	16	20	24	24C	14	18	Judge	Ring
EX			1	1	3	1				Gillian Crawford	1
EX P		1	1		2					Gillian Crawford	1
MAS		8	13	11	29	7	2			Gillian Crawford	1
MAS P	7	8	6	7	5					Gillian Crawford	1
EXC	7	17	21	19	39	8	2			TOTAL RUNS	113
STD	PREM										
Division	4	8	12	16	20	24	24C	14	18	Judge	Ring
PRM		2	1	5	10	2	1			Gillian Crawford	1
PRM P	1	1		2						Gillian Crawford	1
PREM	1	3	1	7	10	2	1			TOTAL RUNS	25
JWW	NOV										
Division	4	8	12	16	20	24	24C	14	18	Judge	Ring
NOV A						1				Zach Davis	2
NOV B				2	2	2				Zach Davis	2
NOV P		2			1					Zach Davis	2
NOV		2		2	3	3				TOTAL RUNS	10
JWW	OPN										
Division	4	8	12	16	20	24	24C	14	18	Judge	Ring
OPEN		1	1	2	2	2				Zach Davis	2
OPEN P					4					Zach Davis	2
OPN		1	1	2	6	2				TOTAL RUNS	12
JWW	EXC										
Division	4	8	12	16	20	24	24C	14	18	Judge	Ring
EX			1		2	1				Zach Davis	2
EX P					1					Zach Davis	2
MAS		8	13	11	30	7	2			Zach Davis	2
MAS P	7	8	8	9	6					Zach Davis	2
EXC	7	16	22	20	39	8	2			TOTAL RUNS	114
JWW	PREM										
Division	4	8	12	16	20	24	24C	14	18	Judge	Ring
PRM		2	1	5	12	3	1			Gillian Crawford	1
PRM P	1	1		3						Gillian Crawford	1
PREM	1	3	1	8	12	3	1			TOTAL RUNS	29
FAST	NOV										
Division	4	8	12	16	20	24	24C	14	18	Judge	Ring
NOV A						1				Zach Davis	2
NOV B		1	1	1	2	2				Zach Davis	2
NOV P					1					Zach Davis	2
NOV		1	1	1	3	3				TOTAL RUNS	9
FAST	OPN										
Division	4	8	12	16	20	24	24C	14	18	Judge	Ring
OPEN			1	1		1				Zach Davis	2
OPEN P			1							Zach Davis	2
OPN			2	1		1				TOTAL RUNS	4
FAST	EXC										
Division	4	8	12	16	20	24	24C	14	18	Judge	Ring
EX				2	2					Zach Davis	2
EX P		1	1	1	1					Zach Davis	2
MAS		2	3		5	2				Zach Davis	2
MAS P	2	2	1	2	1					Zach Davis	2
EXC	2	5	5	5	9	2				TOTAL RUNS	28
T2B	T2B										
Division	4	8	12	16	20	24	24C	14	18	Judge	Ring
PREF	1	3	2	3	4					Zach Davis	2
REG		3	2	2	10	4	1			Zach Davis	2
T2B	1	6	4	5	14	4	1			TOTAL RUNS	35
Judge Totals										Ring Totals	
Zach Davis		212								Ring 1	185
Gillian Crawford		185								Ring 2	212

Sunday – 383 runs

STD		NOV										
Division	4	8	12	16	20	24	24C	14	18	Judge	Ring	
NOV B			1		1	1				Zach Davis	1	
NOV P		1		2	1					Zach Davis	1	
NOV		1	1	2	2	1				TOTAL RUNS	7	
STD		OPN										
Division	4	8	12	16	20	24	24C	14	18	Judge	Ring	
OPEN		1		1	2	2				Zach Davis	1	
OPEN P				2	3					Zach Davis	1	
OPN		1		3	5	2				TOTAL RUNS	11	
STD		EXC										
Division	4	8	12	16	20	24	24C	14	18	Judge	Ring	
EX			2	1	3	1				Zach Davis	1	
EX P		1			1					Zach Davis	1	
MAS		7	19	8	26	8	1			Zach Davis	1	
MAS P	6	8	8	5	6					Zach Davis	1	
EXC	6	16	29	14	36	9	1			TOTAL RUNS	111	
STD		PREM										
Division	4	8	12	16	20	24	24C	14	18	Judge	Ring	
PRM		3	4	4	8	2				Zach Davis	1	
PRM P		3		2						Zach Davis	1	
PREM		6	4	6	8	2				TOTAL RUNS	26	
JWW		NOV										
Division	4	8	12	16	20	24	24C	14	18	Judge	Ring	
NOV B				2	1	1				Gillian Crawford	2	
NOV P		1		2						Gillian Crawford	2	
NOV		1		4	1	1				TOTAL RUNS	7	
JWW		OPN										
Division	4	8	12	16	20	24	24C	14	18	Judge	Ring	
OPEN		1	1	2	1	3				Gillian Crawford	2	
OPEN P				1	3					Gillian Crawford	2	
OPN		1	1	3	4	3				TOTAL RUNS	12	
JWW		EXC										
Division	4	8	12	16	20	24	24C	14	18	Judge	Ring	
EX			3		2	1				Gillian Crawford	2	
EX P			1							Gillian Crawford	2	
MAS		7	18	8	28	8	1			Gillian Crawford	2	
MAS P	6	8	8	7	6					Gillian Crawford	2	
EXC	6	15	30	15	36	9	1			TOTAL RUNS	112	
JWW		PREM										
Division	4	8	12	16	20	24	24C	14	18	Judge	Ring	
PRM		3	4	4	11	2				Zach Davis	1	
PRM P		3		3						Zach Davis	1	
PREM		6	4	7	11	2				TOTAL RUNS	30	
FAST		NOV										
Division	4	8	12	16	20	24	24C	14	18	Judge	Ring	
NOV B		1	1	1	1	1				Gillian Crawford	2	
NOV P					1					Gillian Crawford	2	
NOV		1	1	1	2	1				TOTAL RUNS	6	
FAST		OPN										
Division	4	8	12	16	20	24	24C	14	18	Judge	Ring	
OPEN			2	1						Gillian Crawford	2	
OPEN P				1	1					Gillian Crawford	2	
OPN			2	2	1					TOTAL RUNS	5	
FAST		EXC										
Division	4	8	12	16	20	24	24C	14	18	Judge	Ring	
EX				2	1					Gillian Crawford	2	
EX P		1	1		1					Gillian Crawford	2	
MAS		2	3		4	2				Gillian Crawford	2	
MAS P	2	4	1							Gillian Crawford	2	
EXC	2	7	5	2	6	2				TOTAL RUNS	24	
T2B		T2B										
Division	4	8	12	16	20	24	24C	14	18	Judge	Ring	
PREF		4	1	2	3					Gillian Crawford	2	
REG		3	4	2	9	3	1			Gillian Crawford	2	
T2B		7	5	4	12	3	1			TOTAL RUNS	32	
Judge Totals										Ring Totals		
Zach Davis		185								Ring 1	185	
Gillian Crawford		198								Ring 2	198	