

Request for Workers for the CVSSC February 2026 Agility Trial

We need your HELP for a Successful Trial!

Once again, we are counting on the generosity of agility enthusiasts to pitch in and help keep the trial running smoothly and efficiently. A Worker Sign-Up link will be available closer to the trial.

For those of you who are new to agility, we will train you and offer support as you learn about volunteering for a class. We will make sure your duties will not interfere with running your runs.

A light lunch, snacks, and bottled water will be available for volunteers.

Volunteers will get raffle tickets towards the daily raffle prize of
TWO FREE RUNS at a future LUDS trial!

Entries Open on Tues., Dec. 23, 2025 at 8am EST on a **FIRST RECEIVED** basis at the PO Box address only. All entries received before this date will be returned.

Entries Close on Tuesday, Feb. 3, 2026 at 6pm EST.

Please write CVSSC FEB on the outside of your envelope

All Overnight mail must be sent via **USPS**.

Be sure to check **AND** sign the "**No Signature Required**" waiver or your entry **will not** be accepted. Maximum of 10 entries per envelope.

***** NEW: Accepting Online Entries through www.R2AgilityOnline.com**

Central Virginia Shetland Sheepdog Club

Three AKC Licensed All-Breed Agility Trials

Event # 2026461104 – 2026461105 - 2026461106

This Event is Accepting Entries for Dogs listed in the AKC Canine Partners Program



February 20 - 22, 2026

FRI: EX/MAS STD & EX/MAS JWW,

Premier STD & Premier JWW, T2B and All Levels of FAST

SAT: All levels of STD & JWW, Premier STD & T2B

SUN: All levels of STD & JWW, Premier STD & T2B

Judge: Leslie Gregory

Level Up Dog Sports

8438 Old Richfood Rd, Mechanicsville, VA 23116

Indoors on Synthetic Turf - One ring 78' x 120'

Clip 'n Go Rubberized Contacts

Entries are Limited 350 runs ALL Days

Trial Hours – 7:30am – 7pm FRI 7am to 7pm SAT/SUN

Judging Starts no earlier than 8:30am FRI / 8am SAT & SUN

www.GoneDogginAgility.com



**AMERICAN
KENNEL CLUB**

American Kennel Club Certification

Permission is granted by the American Kennel Club for the holding of this event under the American Kennel Club Rules and Regulations.

Sheila Goffee, Executive Secretary

Central Virginia Shetland Sheepdog Club Officers & Board of Directors

Kara Kolster, DVM, *President* 16088 Geese Lake Ln, Montpelier, VA 23192
Terry Jennings, *Vice President* 13360 Old Ridge Rd., Beaverdam, VA23015
Jennifer Cable, *Corresponding Secretary* PO Box 443., Montpelier, VA 23192
Patricia Harris, *Treasurer* 29463 Signboard Rd., Doswell, VA 23047

Carol Boggess, *Trial Chairman*
8438 Old Richfood Rd, Mechanicsville, VA 23116
(540) 392 - 3622
info@levelupdogsports.com

Jenn Galgano, *Trial Secretary*
PO Box 3070, Virginia Beach, VA 23454
(757) 481 - 4854
GoneDoggin@cox.net
www.GoneDogginAgility.com

EVENT COMMITTEE

Kim Speagle
Maddie Speagle
Aaron Speagle

Merritt Speagle
Lauren Siegel
Zack Kurtz

Jenn Galgano
Sarah Osborne
Laurene Galgano

ENTRY FEES

\$24 per run

Jr. Handlers \$16 per run

(Fees include AKC recording fee of \$4.50 per run)

*** **MAKE checks payable to: LUDS** ***

YOU CAN NOW ENTER VIA the R2AgilityOnline system

www.r2agilityonline.com

Go to the R2 Agility Online system at www.r2agilityonline.com and follow the instructions there to use your R2Agility account to enter this event online. During the first 48 hours after opening, the initial limit of entries designated as either online or paper will be as follows: 83 online / 247 paper. If either form of entry has not filled at the end of the 48 hour time period, the club reserves the right to decrease or increase either one accordingly.

Judge - All Classes/All Days

Leslie Gregory # 104663.....CANTON, GA

Wait List for Withdrawn Entries after Closing

CVSSC is offering a Wait List to fill openings created by withdrawn entries after the trial's closing on February 3, 2026. A maximum of 20 entries will be placed on the wait list. All entries, including waitlisted entries, must be received by the Trial Secretary prior to the trial closing date. Any entries withdrawn that are received by Sunday, February 15, 2026 @ 6pm, will be replaced by a wait listed entry if any are available. If a withdrawn entry is replaced by a waitlisted entry, a full refund will be issued for the withdrawn entry. Any waitlisted entry that does not move off the waitlist into the trial by Sunday, February 15, 2026 @ 6pm will receive a full refund.

No entries will be added to the waitlist without both the entry fees.

If you have not heard about your Wait List status by Tues., Feb. 17, contact us ASAP!

We answer all correspondence and acknowledge receipt of all move-ups and corrections to entries. We usually respond within 2 days unless we are at a trial. Please contact us if you do not hear back in a reasonable timeframe.

IF YOU DO NOT HEAR BACK, WE DID NOT GET YOUR EMAIL OR ENTRY!

ENTRY INFORMATION

- Checks or money orders ONLY ***NO CASH*** payable to "**LUDS**" and mail to Trial Secretary at the PO Box address ONLY.
- **DO NOT SEND IN CVSSC WORKER BUCKS** – put them in a safe place for January 2027
- ***Please write CVSSC FEB on the outside of your envelope***
- All entries must be submitted on official AKC agility entry forms, one dog per entry form. Photocopies of front & back will be accepted only if legible and official AKC size.
- Entries will not be accepted without signature, back of entry form with agreement, and fees, nor will email, telephone or FAX entries be accepted. Overpayments of under \$10 will not be refunded.
- Owners are responsible for ensuring that entry forms are completed IN FULL. Entries submitted without ALL information will be returned as invalid. *****PLEASE WRITE EMAIL ADDRESS LEGIBLY!!!**
- Returned checks do not constitute a valid entry. A \$30.00 service fee will be added for all returned checks.
- Overnight service **MUST** be mailed through USPS and you **MUST** check **AND** sign the "**NO SIGNATURE REQUIRED**" waiver box, as the Trial Secretary will not be present to sign for your entries.
- Limit 10 entries per envelope.
- **CVSSC & LUDS DO NOT AGREE TO ARBITRATE CLAIMS AS SET FORTH ON THE OFFICIAL AKC ENTRY FORM FOR THIS EVENT.**

INVALID ENTRIES

Invalid entries will be returned to the address on the entry form. The following constitute an invalid entry:

- An entry which is missing any AKC required information
- Entries not on Official AKC forms OR on a photocopy of an AKC form without the current agreement and rule on the reverse side or attached to the entry form
- Entries which are illegible or incomplete or received with insufficient fees.
- Conditional, unsigned, incomplete, e-mail, telephone, FAX, or telegraph entries cannot be accepted.
- Returned checks do not constitute a valid entry
- A maximum of ten entries per envelope is allowed. Envelopes with more than the ten dog maximum shall be treated as an invalid entry and shall be returned to the sender.

PLEASE CHECK YOUR ENTRIES CAREFULLY!

CONFIRMATIONS

- Confirmations will be sent via US mail ONLY if an exhibitor does not have an active e-mail address or upon specific request.
- A Preliminary Confirmation will be sent to the e-mail address on the AKC entry form after your entry has been processed. Please review the information in the confirmation for input errors and notify the Trial Secretary of any corrections.
- Final confirmations of entry and judging schedule will be sent to the e-mail address on the AKC form after the closing date.

NOTE: If you have not received the Final confirmation within five days of the trial, please contact the Trial Secretary.

Class Changes Effective January 1, 2020

Entering a Mixture of Regular and Preferred Classes Within the Same Trial Weekend – Multiple Jump Heights Within the Same Trial Day

Effective January 1, 2020, exhibitors may enter a mixture of both Regular and Preferred classes on the same trial day and/or during a trial weekend. Any mixture of Regular and Preferred classes is allowed.

Please note that if a dog qualifies in Regular Master Standard and Preferred Master JWW (or vice versa) on the same trial day, then NO Double Q shall be earned toward either the MACH or PACH title. The Double Q still requires that Standard Agility and Jumpers With Weaves be either both Regular OR both Preferred on the same trial day.

Additionally, within the same Regular or Preferred classes, a dog may now be entered in multiple jump heights within the same trial day. For example, the same dog may now be entered in 20-inch Master STD/JWW while also entered in 24C-inch Premier STD/JWW on the same trial day.

A **separate entry form** must be submitted when the same dog is being entered in a mixture of Regular and Preferred and/or different jump heights within the same trial weekend thereby clearly indicating which class(es) and/or jump heights belong together for each trial day of the weekend.

Fix and Go On (FNG)

Fix and Go On allows exhibitors to immediately reattempt an obstacle at any time while on course when the dog's performance of an obstacle is not to their expectation. This allows the dog to successfully complete the obstacle then finish the course or leave the ring on a positive note. Using Fix and Go On will result in a non-qualifying score. Fix and Go On is not pre-entered; rather, it occurs during the run.

Entering For Exhibition Only (FEO)

CVSSC is offering classes FEO in all classes

- FEO allows exhibitors to work with their dogs in a trial environment. FEO is now offered in all classes. Participation in FEO is non-qualifying.
- FEO runs are treated as trial entries. The exhibitor must enter the class(es) prior to the closing date, pay class entry fee(s) and the Trial Secretary must record the entry in the Trial Catalog as part of the results for that class. FEO does not need to be noted on the entry form; the handler will declare the day of the show.
- Dogs may be entered in any jump height for FEO runs. If entered in an ineligible jump height, the team is committed to FEO for that run and must declare FEO on the start line. Day of show jump height changes are not allowed.
- Dogs may be entered in any level of FAST (Novice, Open, Excellent, Master). If the dog is not eligible for the class level entered, the team is committed to FEO for that run and must declare FEO on the start line. Day of show level changes are not allowed.
- The exhibitor must declare FEO in the ring prior to leading out. FEO may be declared earlier (ex. when checking in at the gate board).
- Toys are allowed in the ring. Toys must be non-audible and may not leave the handler's hand. Toys that roll freely may not be used.
- Food/treats are not allowed in the ring
- FEO should be utilized for the benefit of the dog and not as a punitive correction. Harsh verbal and /or physical corrections shall not be tolerated. Any determination of harshness by the judge shall be immediately whistled and the handler will be dismissed from the ring.
- A judge must monitor the entire run. Judges can stop a run at any time

The AKC is committed to creating a safe and respectful sport environment for all. If you need to talk to someone *or need help, please call 800. 656.HOPE (National Sexual Assault Hotline) or text HOME to 741-741 for free, 24/7, confidential services from trained crisis counselors.*

CLASSES OFFERED

Friday offers Ex/MAS STD, Ex/MAS JWW, All levels of FAST, T2B, and Premier STD & JWW.
Saturday offers all levels of STD, JWW, Premier STD, and T2B.
Sunday offers all levels of STD, JWW, Premier STD, and T2B.

Please consult AKC rules and regulations pertaining to Agility Trials for complete description and eligibility for entry in these classes. The exhibitor is fully responsible for entering the dog in the correct class/division.

RUNNING ORDER

FRI & SUN **HIGH to LOW** (24/24C, 20, 16, 12, 8, 4)

SAT **LOW to HIGH** (4, 8, 12, 16, 20, 24/24C)

FRIDAY

Combined FAST - Premier STD - Ex/Mas STD – T2B – Premier JWW - Ex/Mas JWW

SATURDAY

T2B - Premier STD - Ex/Mas STD - Ex/Mas JWW - OPN JWW - NOV JWW - OPN STD – NOV STD

SUNDAY

T2B - Premier STD - Ex/Mas STD - Ex/Mas JWW - OPN JWW - NOV JWW - OPN STD – NOV STD

HEIGHT DIVISIONS

Owners/Agents are responsible for entering the proper height divisions.

REGULAR	PREFERRED	INFORMATION
Exhibitors may choose to enter their dog in a higher height division than required by AKC, but not in a lower height division than the AKC mandated height.	The following jump heights shall be used in all Preferred classes.	Owners are responsible for entering their dog in the proper height division For dogs measuring ...
8"	4"	For dogs 11 inches & under at the withers
12"	8"	For dogs 14 inches & under at the withers
16"	12"	For dogs 18 inches & under at the withers
20"	16"	For dogs 22 inches & under at the withers
24"	20"	For dogs over 22 inches at the withers
24C"	---	Dogs who measure into the 24-inch regular jump height division are not eligible to enter 24-Choice.

NOTE: Handlers whose dogs measure into the 8" through 20" regular jump height division may optionally enter in 24-Choice (24C) jump height at their discretion.

😊 Simplified Jump Height Card Process 😊

If your dog needs to be measured, check the box at the top of the entry form so that your dog is placed on the Measuring List. ***It is no longer required that you submit a copy of your dog's jump height card with your entry form or show it during day of show check-in.***

**It is the exhibitor's responsibility to have their dog measured prior to running.
Failure to do so will result in the cancellation of any qualifying scores.**

OBSTACLES

All obstacles and equipment used at this trial meet the requirements for AKC agility trials.

All exhibitors should obtain a copy of the Regulations for Agility Trials by downloading them from the American Kennel Club website at <http://www.akc.org/rules/>.

DOGS ELIGIBLE TO ENTER

This trial is open to all dogs fifteen (15) months of age or older that are registered with the American Kennel Club or that have AKC Limited Registration, Purebred Alternative Listing/Indefinite Listing Privileges (PAL/ILP), an AKC Canine Partners listing number, or approved Foundation Stock Service (FSS) breeds are eligible to participate.

Dogs with a Purebred Alternative Listing/Indefinite Listing Privileges (PAL/ILP) or an AKC Canine Partners listing number must be spayed or neutered in order to compete. Wherever the word "dog" is used in these regulations it includes both sexes.

Dogs should be physically sound. Dogs that are blind shall not be eligible, and neither are bitches in season, aggressive dogs, or dogs suffering from any deformity, injury, or illness which may affect the dog's physical or mental performance. No dog shall compete if it is taped or bandaged in any way or has anything attached to it for medical purposes. Refer to Chapter 2 of the Registration and Discipline Rules for the listing of registerable breeds that may participate.

NOTICE TO EXHIBITORS

The safety of the dogs is our primary concern. By entering this trial, exhibitors acknowledge that they are familiar with the rules and regulations of this sport, and that their dogs are familiar with and able to perform all obstacles safely. It is expressly understood that the exhibitors alone are responsible for the behavior of their dogs and/or children. Any exhibitor whose dogs and/or children create unnecessary disturbances or repeatedly engage in unsafe or disruptive behavior may, at the discretion of the Event Committee, be asked to leave the show site. In such case, no refund of any entry fees will be made. Entry fees will not be refunded in the event that the dog is absent, disqualified, excused, or barred from competition by action of the Event Committee. No entry fee will be refunded if the trial cannot open or be completed by reason of civil disturbances, fire, an act of God, public emergency, act of a public enemy, or any other cause beyond the control of the organizing committee. Exhibitors are responsible for being at the ring gate when it is their turn to run. No classes will be held up by a late exhibitor. Umbrellas are not allowed on the course during walkthroughs. All dogs must be on leash at all times except when in the ring or when in the designated agility warm-up area. No dogs may be left tied to trees, cars, fences, etc. Dogs under 4 months of age are not allowed at this trial.

RIBBONS AND AWARDS

Flat placement ribbons will be awarded to the first through fourth place dog in each jump height division in each class. Flat Qualifying ribbons will be awarded to all dogs receiving a qualifying score. MACH/PACH Rosettes and a MACH/PACH bar will be given to exhibitors earning a MACH or PACH title at this trial. All ribbons and prizes must be claimed the day of the Trial; none will be mailed. New Title rosettes ribbons will be given to each dog earning a new title (excludes Metallic titles). Double Q flat ribbons will be available for dogs qualifying in both Master STD & Master JWW, regular or preferred, on the same day**

MOVE UPS

Move ups must be sent in writing (E-mail is acceptable and preferred) to the Trial Secretary for the February 20 trial no later than Monday, February 16th at 6pm.

Day to Day Move ups will be accepted but must be submitted in person to the trial secretary no later than 15 minutes after the last run is judged for each class (STD & JWW).

SITE INFORMATION

- **Crating:** Priority will be given to volunteers who are working the entire day. If there is additional space it will first come, first served. Crating is only allowed on the tarps set down by LUDS. Please conserve space. Trial committee reserves the right to rearrange set-ups in order to fit more dogs in the building. Do not block aisles.
- For a safer trial environment, soft and hard crates must be zipped completely for example without holes for dogs to stick their heads out. X-pens must have a secure top and bottom.
- Respect the traffic cones when parking – they are marking the turning radius for truck traffic. Do not park in front of any gate or doorway.
- Please do not potty your dogs on the neighboring tenants' lawns.
- The show site is climate controlled indoors on turf flooring. There is a warm up area for all exhibitors.
- All turf accidents must be reported immediately and the clean-up fee paid. See signs posted in the building for fee structure and new payment options.
- Dogs must be kept on leash when not in the ring.
- We will be using Agility Gate as an electronic gate. Maps will be posted on Agility Gate and in the building.

REFUNDS

Bitches in season will not be admitted to the trial. Any exhibitor with an entered bitch in season, on the trial date, will be given a cash refund, less \$3 per run (per day), upon written certification from a veterinarian. Notification must be in the hands of the trial secretary no later than 30 minutes before the start time on the date of the trial.

Injury/Illness

Dogs that cannot compete prior to the set of trials due to an injury/illness will be given a certificate good for future LUDS Sponsored trials, less \$10 for each run (per day).

A written vet letter (on office letterhead) must be given to the Trial Secretary no later than 30 minutes before the start time on Friday, February 20, 2026.

Documentation of the injury/illness must be made in a writing signed and dated by a licensed veterinarian stating that the dog cannot compete at this specific set of trials and/or providing a time period from the date on the written note from the veterinarian during which the dog cannot compete. Requests from chiropractors, massage/physical therapists, etc will not be accepted. All injury partial refunds subject to verification. Handler illness/injury is excluded from this policy.

VETERINARIAN ON CALL

Dogwood Veterinary Emergency, 804-716-4700, 24 hour emergency service
5918 W. Broad Street, Richmond, VA 23230

Veterinary Emergency & Specialty Center, 804-353-9000,
3312 West Cary Street, Richmond, VA 23221

RV PARKING

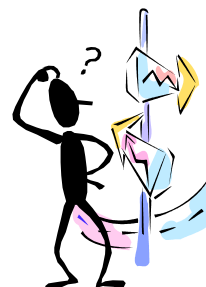
Limited RV parking may be available.

Please contact info@levelupdogsports.com for more information.

DIRECTIONS TO THE SITE

Level Up 8438 Old Richfood Rd, Mechanicsville, VA 23116

Note: If you are using GPS navigation, make sure to use the address above.



From I-95 South

- Take Exit 84A to merge onto I-295S
- Take Exit 41B to merge onto US-301S/VA-2 S/Chamberlayne Rd.
- ***Follow Directions Below

From I-95 North

- Take Exit 82 for US-301 N/VA-2 N.
- Turn LEFT onto US-301 N/VA-2 N/Chamberlayne Rd.
- Turn RIGHT onto Richfood Rd.
- Turn LEFT onto Old Richfood Rd

From I-64E East

- Take Exit 177 for I-295
- Take Exit 41B to merge onto US-301S/VA-2 S/Chamberlayne Rd
- ***Follow Directions Below

From I-64E West

- Take Exit 200 for I-295
- Take Exit 41B to merge onto US-301S/VA-2 S/Chamberlayne Rd
- ***Follow Directions Below

**** Turn LEFT at the 1st light onto Richfood Rd. At mulch piles, turn LEFT onto Old Richfood Rd. Building will be on the RIGHT. Look for the Level Up Dog Sports sign.

HOTELS

Please check the hotel's pet policy when making your reservations

Candlewood Suites, 804-262-2240

4120 Tom Leonard Drive, Glen Allen, Virginia 23060

10% off & Reduced Pet Fee with booking link:

[LUDS Corporate Rate Candlewood @Short Pump/Glen Allen](#)

The following hotels do not have a special rate. Call for pricing and pet policies.

Avid 804-800-5960

10261 Washington Hwy., Glen Allen, VA 23059 (10 minutes from Level Up)

Hampton Inn –Richmond-Mechanicsville, 804-559-0559

7433 Bell Creek Rd., Mechanicsville, VA 23111

Candlewood Suites, 804-262-2240 (9 minutes from Level Up)

10609 Telegraph Rd., Glen Allen, VA 23059

LaQuinta Inn& Suites, 804-876-6900 (18 minutes from Level Up)

16280 International Street, Doswell, VA 23047 Free breakfast and high speed internet

Springhill Suites, 804-266-9403 9701 Brook Rd., Glen Allen, VA 23059

Tru by Hilton, 804-365-5830 101 North Carter Rd., Ashland, VA 23005

AGREEMENT

I certify that I am the actual owner of the dog, or that I am the duly authorized agent of the actual owner whose name I have entered. In consideration of the acceptance of this entry, I (we) agree to abide by the rules and regulations of The American Kennel Club in effect at the time of this event, and any additional rules and regulations appearing in the premium list of this event and entry form and any decision made in accord with them. I (we) agree that the club holding this event has the right to refuse this entry for cause which the club shall deem sufficient. I (we) certify and represent that the dog entered is not a hazard to persons or other dogs. In consideration of the acceptance of this entry and of the holding of this event and of the opportunity to have the dog judged and to win prizes, ribbons, or trophies, I (we) agree to hold the AKC, the event-giving club, their members, directors, governors, officers, agents, superintendents or event secretary and the owner and/or lessor of the premises and any provider of services that are necessary to hold this event and any employees or volunteers of the aforementioned parties, and any AKC approved judge, judging at this event, harmless from any claim for loss or injury which may be alleged to have been caused directly or indirectly to any person or thing by the act of this dog while in or about the event premises or grounds or near any entrance thereto, and I (we) personally assume all responsibility and liability for any such claim; and I (we) further agree to hold the aforementioned parties harmless from any claim for loss, injury or damage to this dog. Additionally, I (we) hereby assume the sole responsibility for and agree to indemnify, defend and save the aforementioned parties harmless from any and all loss and expense (including legal fees) by reason of the liability imposed by law upon any of the aforementioned parties for damage because of bodily injuries, including death at any time resulting therefrom, sustained by any person or persons, including myself (ourselves), or on account of damage to property, arising out of or in consequence of my (our) participation in this event, however such, injuries, death or property damage may be caused, and whether or not the same may have been caused or may be alleged to have been caused by the negligence of the aforementioned parties or any of their employees, agents, or any other person. I (we) agree that the determination of whether the injury is serious shall be made by the event veterinarian and is binding on me (us).

I (WE) AGREE THAT ANY CAUSE OF ACTION, CONTROVERSY OR CLAIM ARISING OUT OF OR RELATED TO THE ENTRY, EXHIBITION OR ATTENDANCE AT THE EVENT BETWEEN THE AKC AND THE EVENT-GIVING CLUB (UNLESS OTHERWISE STATED IN THIS PREMIUM LIST) AND MYSELF (OURSELVES) OR AS TO THE CONSTRUCTION, INTERPRETATION AND EFFECT OF THIS AGREEMENT SHALL BE SETTLED BY ARBITRATION PURSUANT TO THE APPLICABLE RULES OF THE AMERICAN ARBITRATION ASSOCIATION. HOWEVER, PRIOR TO ARBITRATION ALL APPLICABLE AKC BYLAWS, RULES, REGULATIONS AND PROCEDURES MUST FIRST BE FOLLOWED AS SET FORTH IN THE AKC CHARTER AND BYLAWS, RULES, REGULATIONS, PUBLISHED POLICIES AND GUIDELINES.

INSTRUCTIONS

Handlers whose dogs measure into the 8" through 20" regular jump height divisions may opt to enter in a higher or 24-choice height division for all Regular titling classes, but not in a division lower than their proper height division. Dogs who measure into the 24" regular jump height division may not enter 24-choice. Dogs entered in the Preferred classes must compete at the required jump height and may not compete in a jump height division higher or lower than their proper height division.

All dogs that have not been officially measured for an **Agility Jump Height Card** may still compete; however, they must be measured by a Judge of record, an Agility Field Representative, or a Volunteer Measuring Official, prior to running. If measured by the Judge of record, that measurement will be valid for this trial *or back-to-back trials* only. If a measurement is necessary, it is the exhibitor's responsibility to have their dog(s) measured prior to running.

Dogs listed in the **AKC Canine PartnersSM** program may be eligible to enter all-breed AKC agility trials at the club's option. These dogs should be listed as All American Dog and must include their AKC number on the entry form and check the AKC No. box.

Junior Handlers should enter their Junior Handler number on the front of this form. Should you not have your Junior Handler number, it may be obtained from the American Kennel Club (919) 233-9767. If the Junior Handler is not the owner of the dog identified on the face of this form, what is the relationship of the Junior Handler to the Owner? _____

Emergency

Contact: **NAME:** _____ **PHONE #:** _____**BY SIGNING YOUR ENTRY FORM, YOU CONFIRM****THAT YOU WILL ABIDE BY THE SITE RULES LISTED IN THE PREMIUM****SIGNATURE** OF OWNER OR HIS AGENT

DULY AUTHORIZED TO MAKE THIS ENTRY _____

TELEPHONE: _____**E-MAIL ADDRESS:** _____ ☐ *New Email*

OFFICIAL ENTRY FORM FOR AGILITY TRIALS

CVSSC - FEBRUARY Trials

Three All-Breed Licensed Agility Trials

Level Up, 8438 Old Richfood Rd, Mechanicsville, VA 23116

AMERICAN
KENNEL CLUB
☐ This is a separate
Mixed Height Entry
Entry Fees: \$24 per run

(includes AKC recording fees).

Checks payable to:**LUDS**

Day	Date	STD	JWW	FAST	T2B	PREMIER	
						STD	JWW
FRI	2-20-26	EX/ MAS	EX/ MAS				
SAT	2-21-26			N/A			N/A
SUN	2-22-26			N/A			N/A

Opens: Tues., 12-23-25 at 8am **EST** Closes: Tues., 2-3-26 at 6pm **EST** Limit 10 entries per envelopeMail to: Jenn Galgano, **CVSSC FEB**, PO Box 3070, Virginia Beach, VA 23454**FIRST RECEIVED****IMPORTANT: Carefully read instructions before filling out!****ENTRY FEE ENCLOSED****Choose Either Regular OR Preferred Classes***Circle one jump height -- circle class selections -- Only one selection per class (BOTH Master & Premier allowed)*

REGULAR Classes						PREFERRED Classes				
8"	12"	16"	20"	24"	24C"	4"	8"	12"	16"	20"
STD	Nov A	Nov B	Open	Ex	Master	STD	NovP	OpenP	ExP	MasterP
JWW	Nov A	Nov B	Open	Ex	Master	JWW	NovP	OpenP	ExP	MasterP
FAST	Nov A	Nov B	Open	Ex	Master	FAST	NovP	OpenP	ExP	MasterP
T2B	T2B	PREMIER ___STD ___JWW				T2B	T2BP	PREMIER-P ___STD ___JWW		

Non-Regular Classes International Sweepstakes ___STD ___JWW

This Dog Needs To Be Measured <input type="checkbox"/> Yes <input type="checkbox"/> No	SEX	HEIGHT AT WITHERS	CALL NAME OF DOG
BREED	VARIETY		

AKC@ NAME (INCLUDE AKC TITLES ONLY)

[] AKC@ NO	Enter Complete Registration # below	DATE OF BIRTH
[] ILP NO.		
[] PAL NO.		
[] FOREIGN REG. NO & COUNTRY		PLACE OF BIRTH (LIST COUNTRY)

BREEDER

SIRE

DAM

ACTUAL OWNERS

OWNERS ADDRESS

[] **New**

CITY, STATE ZIP + 4

HANDLER

ENTER JR. HANDLER # if applicable

Exhibitor or owner MUST SIGN on the signature line beneath the instructions